



"The Whitehaven Run"

Everything you need to know about venturing through the Whitsunday Islands from Mackay Marina...





Welcome to the Whitsunday Islands

The Whitsunday Islands are a group of 74 tropical islands located along the Queensland coast of Australia. With turquoise waters, white sandy beaches, and lush rainforests, the Whitsundays are one of the world's premier boating destinations. The islands are located within the Great Barrier Reef Marine Park, providing protection for the stunning coral reefs and diverse marine life.

We are happy to provide you with the "How To" of Island Hopping through the Whitsundays

The Run to Whitehaven Beach

Like many things in life, there's more than one way to do it. So that's why we've considered a few options for you.

Mackay to Keswick Is / St Bees Is

Keswick Is / St Bees to Lindeman Is

Lindeman Is to Whitehaven Beach

Whitehaven Beach to Hamilton Is

Hamilton Is to Lindeman Is

Lindeman Is to Brampton Is / Carlisle Is

Brampton Is / Carlisle Is to Mackay



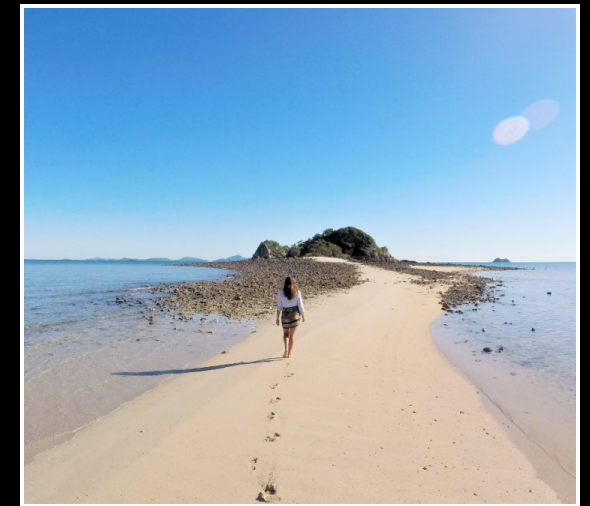
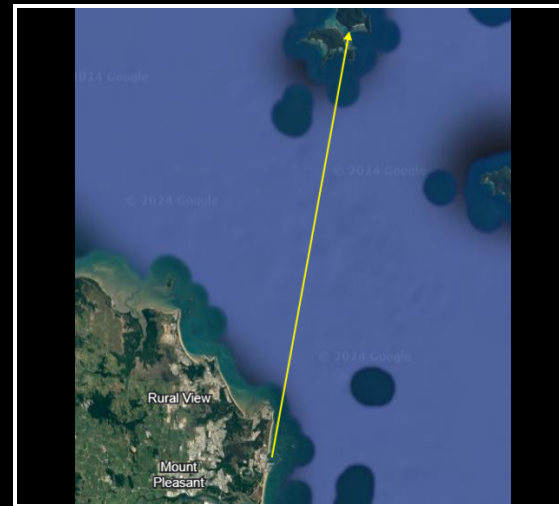
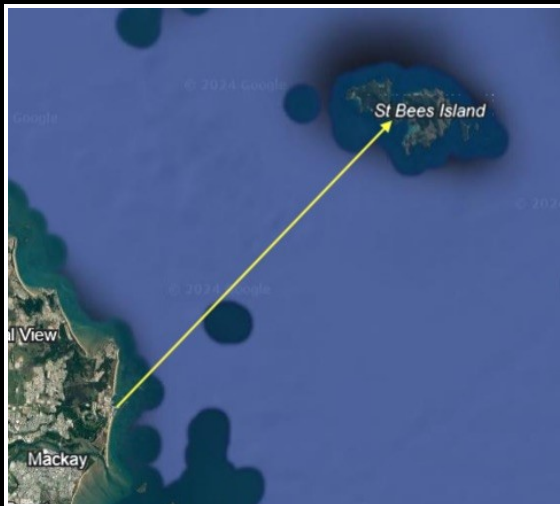
Outbound



Inbound

Island Hop 1

From Mackay Marina to:



Mackay Marina to Keswick Island or St Bees Island

16 Nautical Miles

10 knots - 1.6hrs

15 knots - 1.06hrs

20 knots - 0.80hrs

Keswick Island

Keswick is abundant with a broad range of animals including more than 60 bird species.

For the fit and adventurous there are seven walking trails on Keswick that you can explore.

Eagle View Place Lookout is the best location for taking in beautiful sunsets.

There are 96 residents on the island.

Connie Bay is the perfect place to anchor in a SE swell.

Mackay Marina to Brampton Island or Carlisle Island

18 Nautical Miles

10 knots - 1.8hrs

15 knots - 1.20hrs

20 knots - 0.90hrs

Brampton Island

Just off shore is a diverse range of fringing reefs where you can discover an amazing array of marine life and soft and hard corals.

The passage in-between Brampton and Carlisle Islands is known as the "Fishbowl" and is a renowned snorkelling area, where reef sharks, turtles and a kaleidoscope of tropical fish can be witnessed.

Just off Pelican Island is the perfect place to anchor in a SE swell.

Island Hop 2



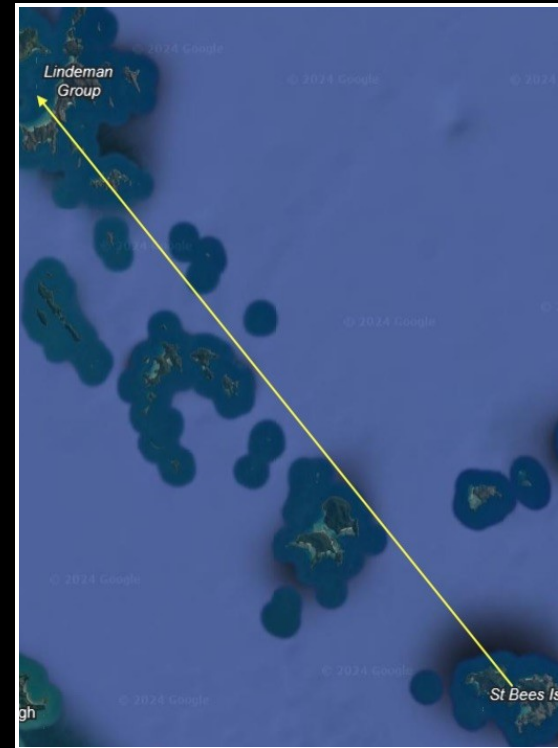
Brampton Island or Carlisle Island to Cumberland Islands (Lindeman Island)

22 Nautical Miles
10 knots - 2.2hrs
15 knots - 1.4hrs
20 knots - 1.1hrs



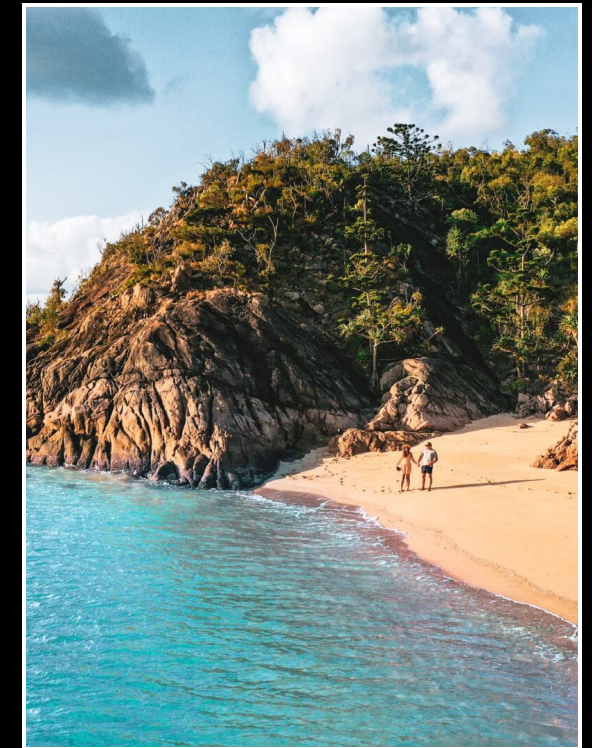
Lindeman Island

Recently acquired by a Singaporean family.
You can camp overnight at Boat Port, which also has great bushwalking tracks. Boat Point is a great place to anchor in a SW swell.



Keswick Island or St Bees Island to Cumberland Islands (Shaw Island)

33 Nautical Miles
10 knots - 3.3hrs
15 knots - 2.2hrs
20 knots - 1.6hrs



Shaw Island

Neck Bay on Shaw Island is well suited for anchoring because it's sheltered from winds from the South, North and the East.
You can camp overnight within the vegetated sand spit between what was once two islands.

Island Hop 3 & 4



Cumberland Islands (Lindeman Island) to Whitehaven Beach

12 Nautical Miles
10 knots - 1.2hrs
15 knots - 0.8hrs
20 knots - 0.6hrs



Whitehaven Beach

Witness the most beautiful beach in the world.

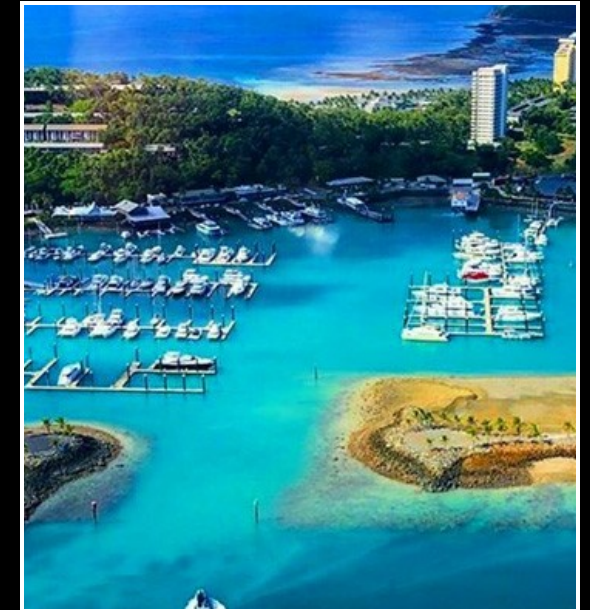
Not many people know that the white silica sands come from an underground volcanic geyser in the bay. If you look on google earth you can clearly see a white plume adjacent to the beach.

Most of the time you can anchor in the bay (there are public moorings available too). If the swell gets too much you can anchor just to the north in Tongue Bay.



Whitehaven Beach to Hamilton Island

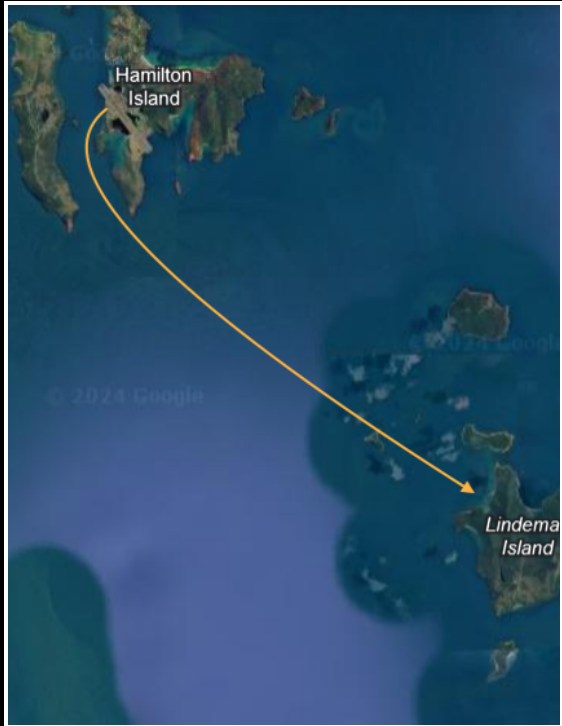
10 Nautical Miles
10 knots - 1.0hrs
15 knots - 0.7hrs
20 knots - 0.5hrs



Hamilton Island

Book a berth ahead of time. Venture into the island, replenish stores, drink a cocktail by one of the pools or rent a room overnight.

Island Hop 5



Hamilton Island to Cumberland Islands (Shaw Island)

10 Nautical Miles
10 knots - 1.0hrs
15 knots - 0.7hrs
20 knots - 0.5hrs



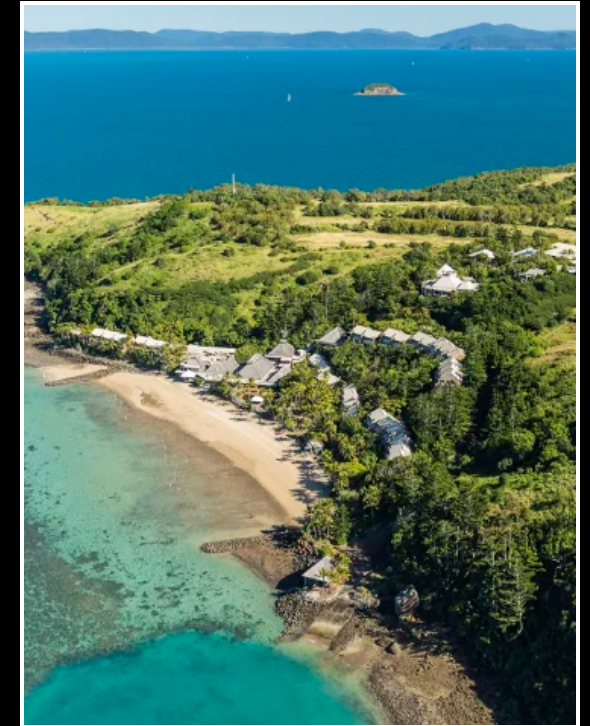
Shaw Island

The name Neck Bay on Shaw Island, is due to the area resting on an old vegetated sand spit between what was once two islands. You can walk the trail inland from the Neck Bay beach, and it won't take you long to reach the opposite coast, where you'll see a completely different coastline.



Whitehaven Beach to Cumberland Islands (Lindeman Island)

12 Nautical Miles
10 knots - 1.2hrs
15 knots - 0.8hrs
20 knots - 0.6hrs



Lindeman Island

Lindeman also boasts scenic walking tracks and tours. There are also Picnic and day-use areas, including swimming and snorkelling and birdwatching.

Island Hop 6



Cumberland Islands (Shaw Island) to
Brampton Island or Carlisle Island

22 Nautical Miles
10 knots - 2.2hrs
15 knots - 1.4hrs
20 knots - 1.1hrs



Brampton Island



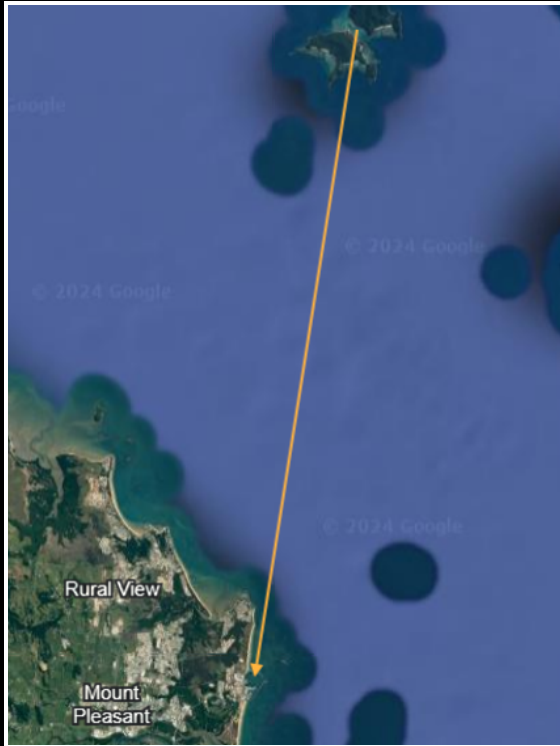
Cumberland Islands (Lindeman Island)
to Keswick Island or St Bees Island

33 Nautical Miles
10 knots - 3.3hrs
15 knots - 2.2hrs
20 knots - 1.6hrs



St Bees Island

Island Hop 7



Brampton Island or Carlisle Island to
Mackay Marina

18 Nautical Miles

10 knots - 1.8hrs

15 knots - 1.20hrs

20 knots - 0.90hrs



Brampton Island



Keswick Island or St Bees Island to
Mackay Marina

16 Nautical Miles

10 knots - 1.6hrs

15 knots - 1.06hrs

20 knots - 0.80hrs



St Bees Island

Itinerary Highlights



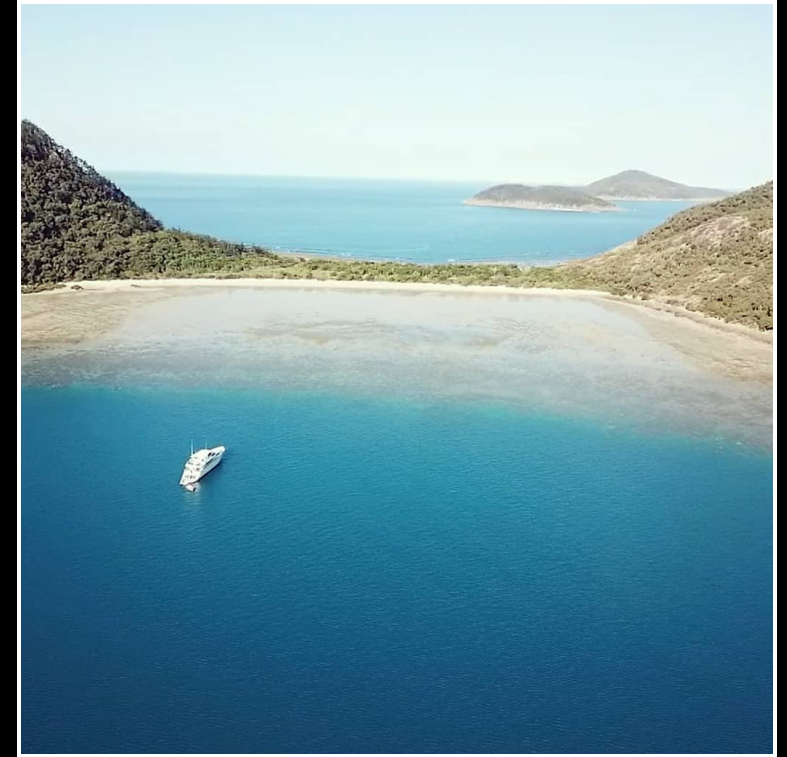
Whitehaven Beach Panorama

Whitehaven Beach boasts the world's whitest sands. Offset against breathtaking turquoise water, Whitehaven is known as one of the most beautiful places on earth.



Hamilton Island

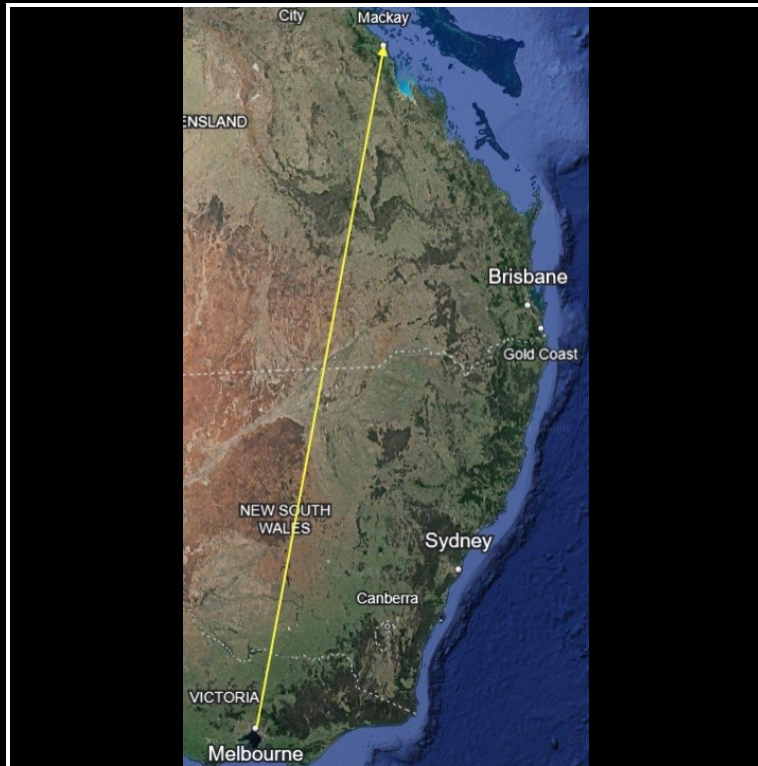
Moor up, fill up and replenish with all that is on offer at Hamilton Island.



Shaw Island

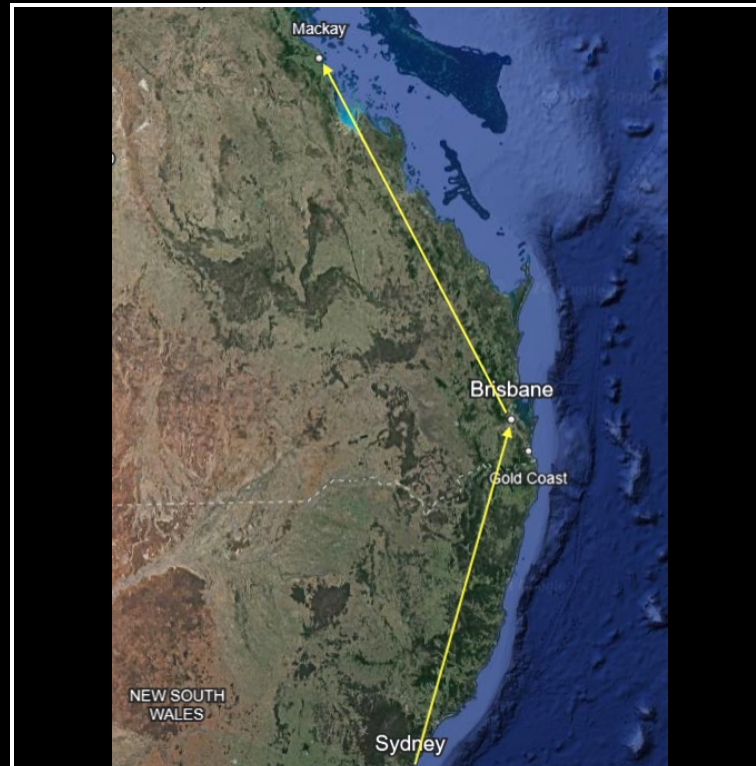
Located on the North-west side of Shaw Island, Neck Bay is a remote spot protected from south & east winds.

Flights to Mackay



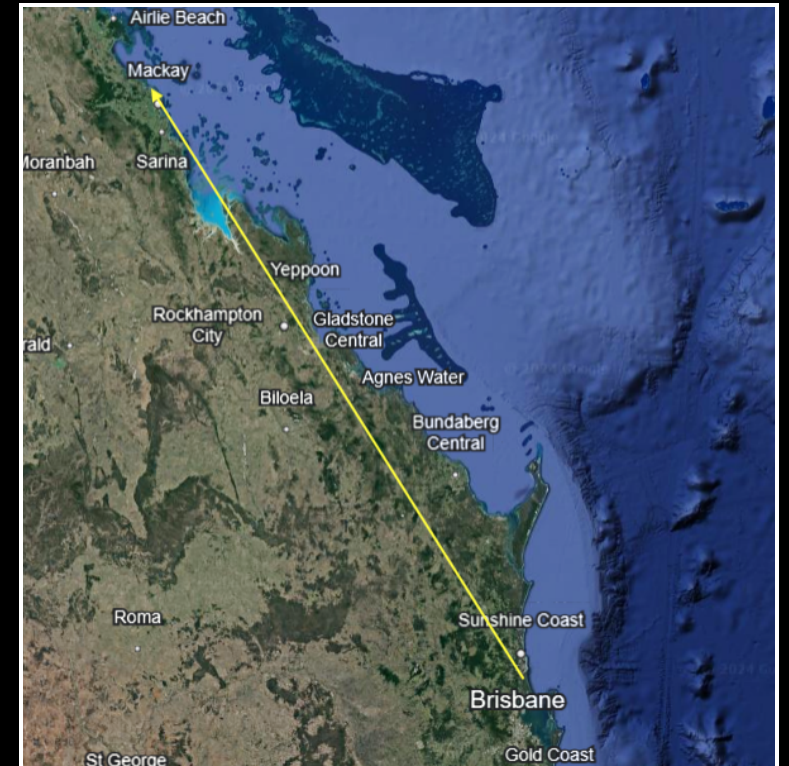
Melbourne to Mackay

1880kms - Flight time 3hrs non-stop
from \$500 return p.p.
Bonza, Virgin, Qantas



Sydney to Mackay

1530kms - Flight time 3hrs 45mins one-stop
from \$400 return p.p.
Virgin, Qantas, Jetstar



Brisbane to Mackay

800kms - Flight time 1hrs 35mins non-stop
from \$200 return p.p.
Virgin, Qantas, Jetstar

Before you confirm your trip to the Whitsundays...



- Talk to us about bulk discounts on high-speed fuel
- A limited number of berthing packages available for Winter 2024
- Berthing available for Superyachts 25m- 55m in length
- 4 x Alongside 55m berths with vehicular access on berth
- Large catamaran berths available
- We are the only Gazetted International Clearance Port in the Whitsundays

When to Visit Mackay Marina

● May to October

The dry season offers warm, sunny days perfect for smooth sailing and motoring.

Prevailing winds from SE.

● December to February

The wet season brings fewer crowds and lower prices on tours and accommodation.

Prevailing winds from N.

● June to October

Whale watching opportunities peak during the annual humpback whale migration.

Prevailing winds from SE.

Getting There



Flight from
Melbourne
Sydney
Brisbane
to Mackay

Arrange transfers to Mackay
Marina

Check in with Mackay
Marina

And your off to your first
island

Embark on the Whitehaven
Run

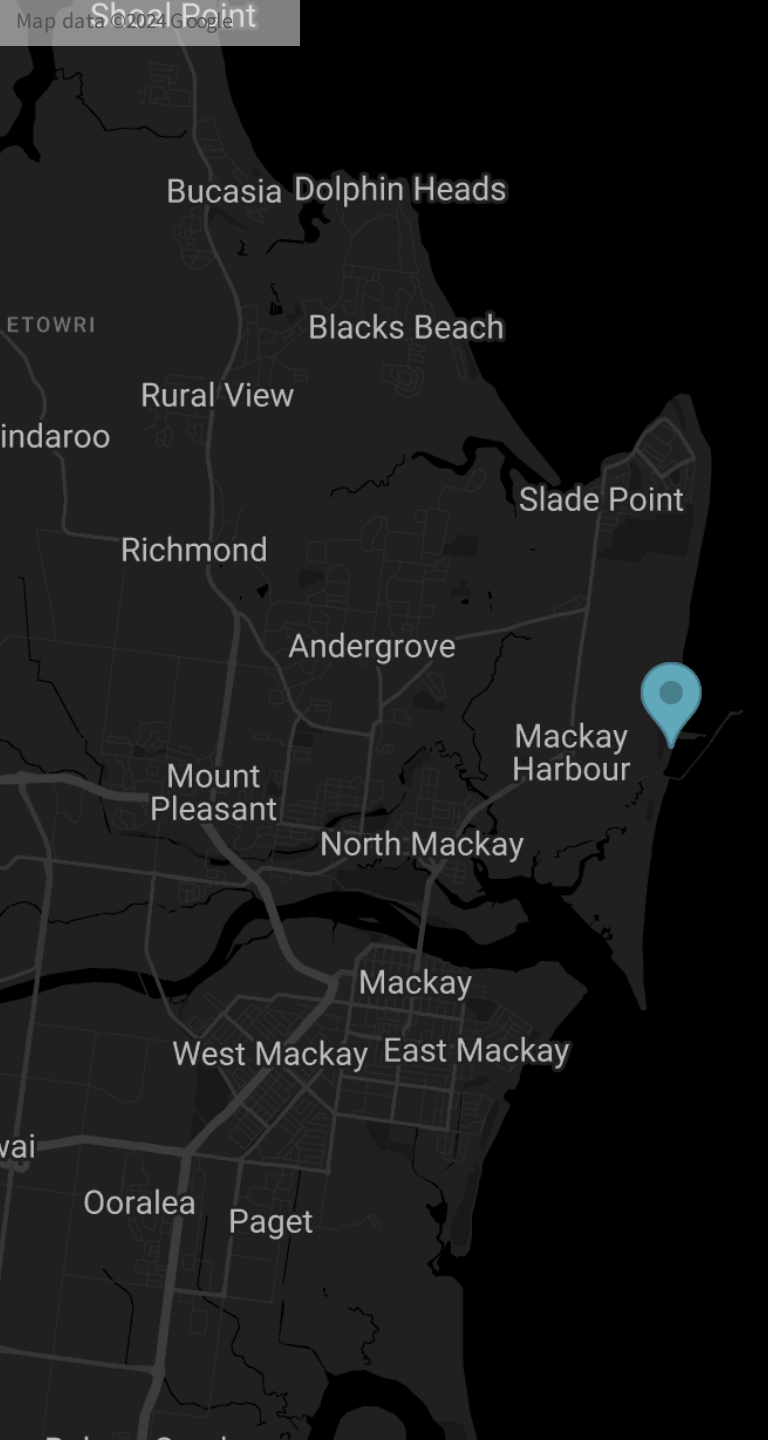
Book a flight from your location to Mackay Airport. Mackay is the southern gateway to the Whitsunday Islands.

We will work with you to arrange ground transportation from the Mackay airport to the marina.

Check in with us that you have all of the provisioning that you have ordered.


Drop the lines and you're away..

Over the next few days you will sail and explore the beautiful Whitsunday Islands and Great Barrier Reef.



Contact Us

Mackay Marina Village

 (+61 7) 4955 6855

 reception@mackaymarina.com

 www.mackaymarina.com

4/46 Mulherin Drive, Mackay Queensland 4740

